

Evidence of
An Taisce, The National Trust for Ireland

in relation to

Oral Hearing

in relation to

New National Paediatric Hospital, Eccles Street,
Dublin 7

27th October 2011

Visual Impact of proposed development



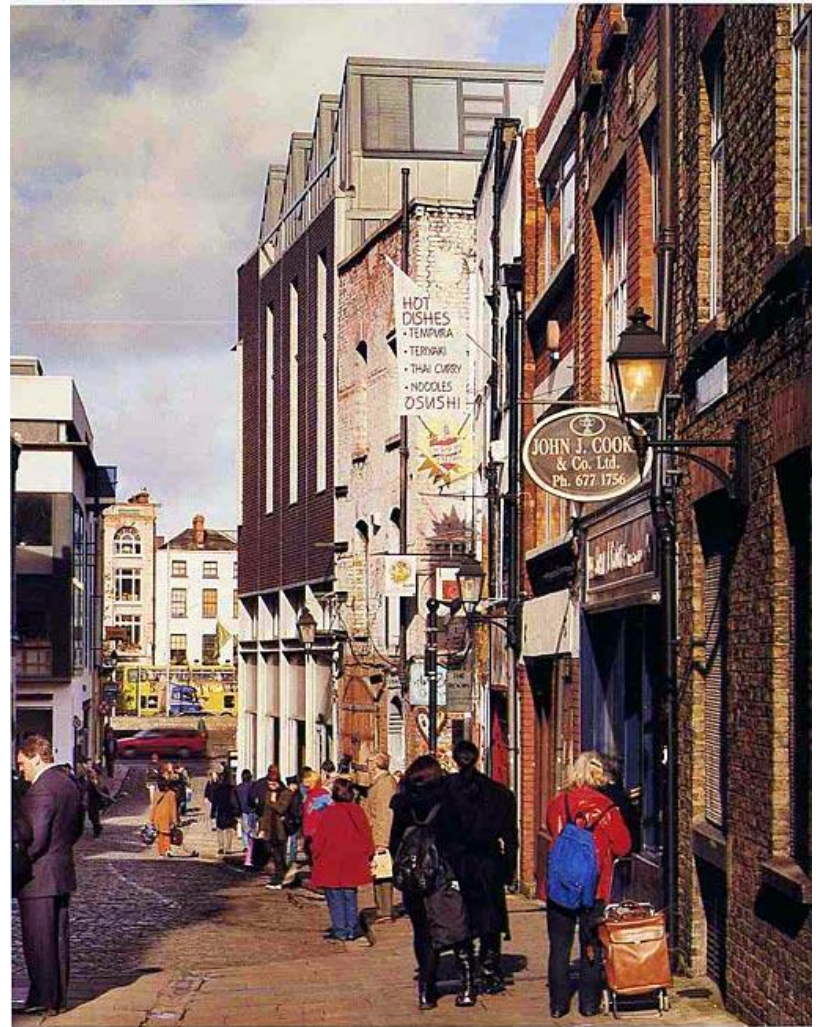
Temple Bar





Temple Bar





Temple Bar

BOI
College
Green

Proposed
building

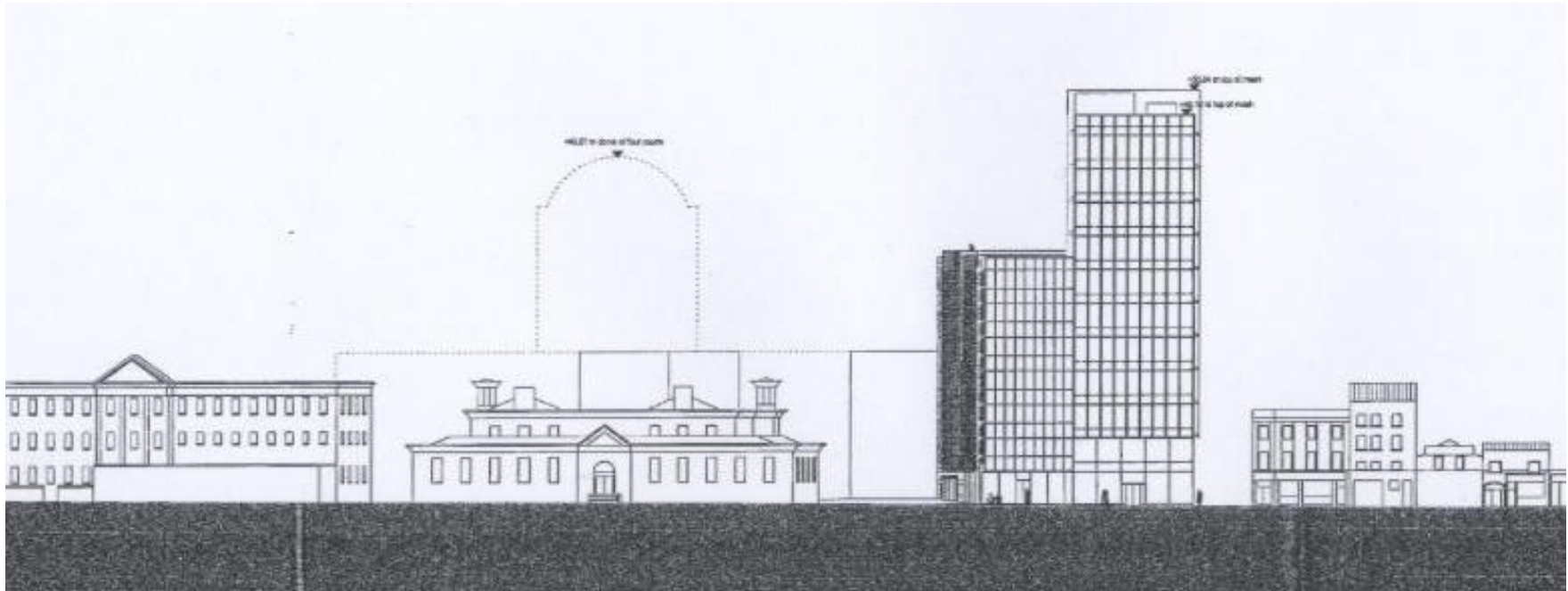
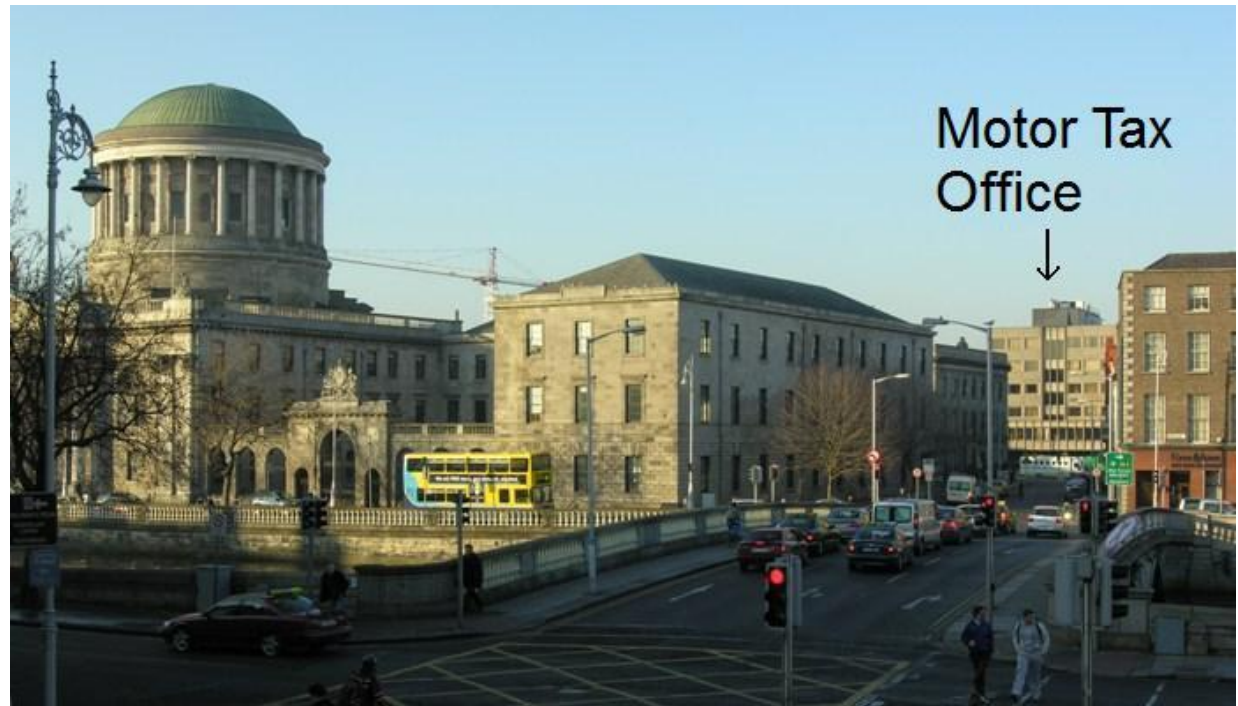


Former ESB office, Fleet Street



Smithfield Market

11-storey tower proposal, Four Courts



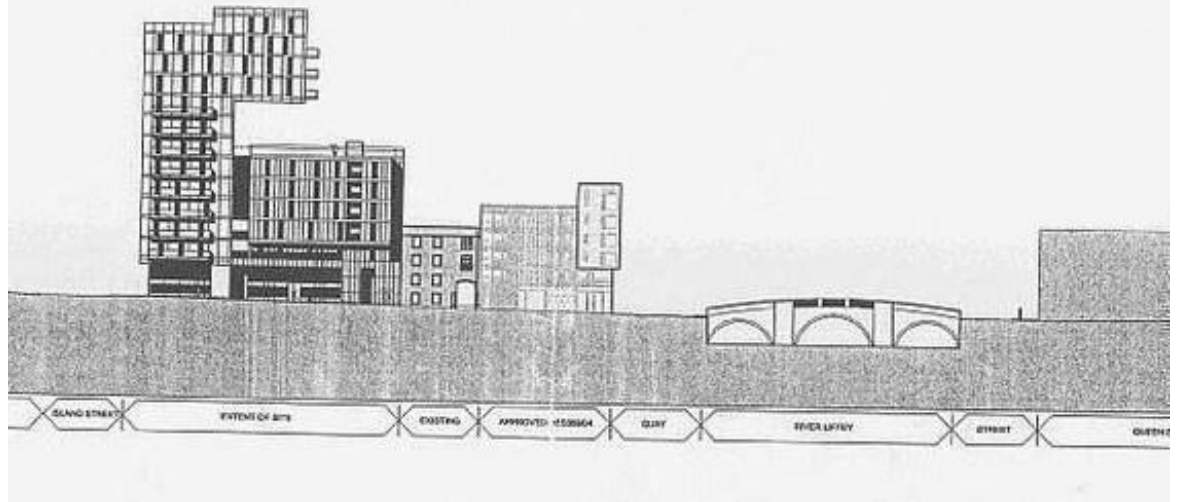


Proposed “Mini-Manhattan”, Digital
Hub, Thomas Street

Proposed 13-
storey
building, Liffey
Quays (Queen
Street bridge)



PERMITTED BY CITY COUNCIL





Elevated park proposal, O'Connell Street



Grangeegorman – former Richmond
Asylum

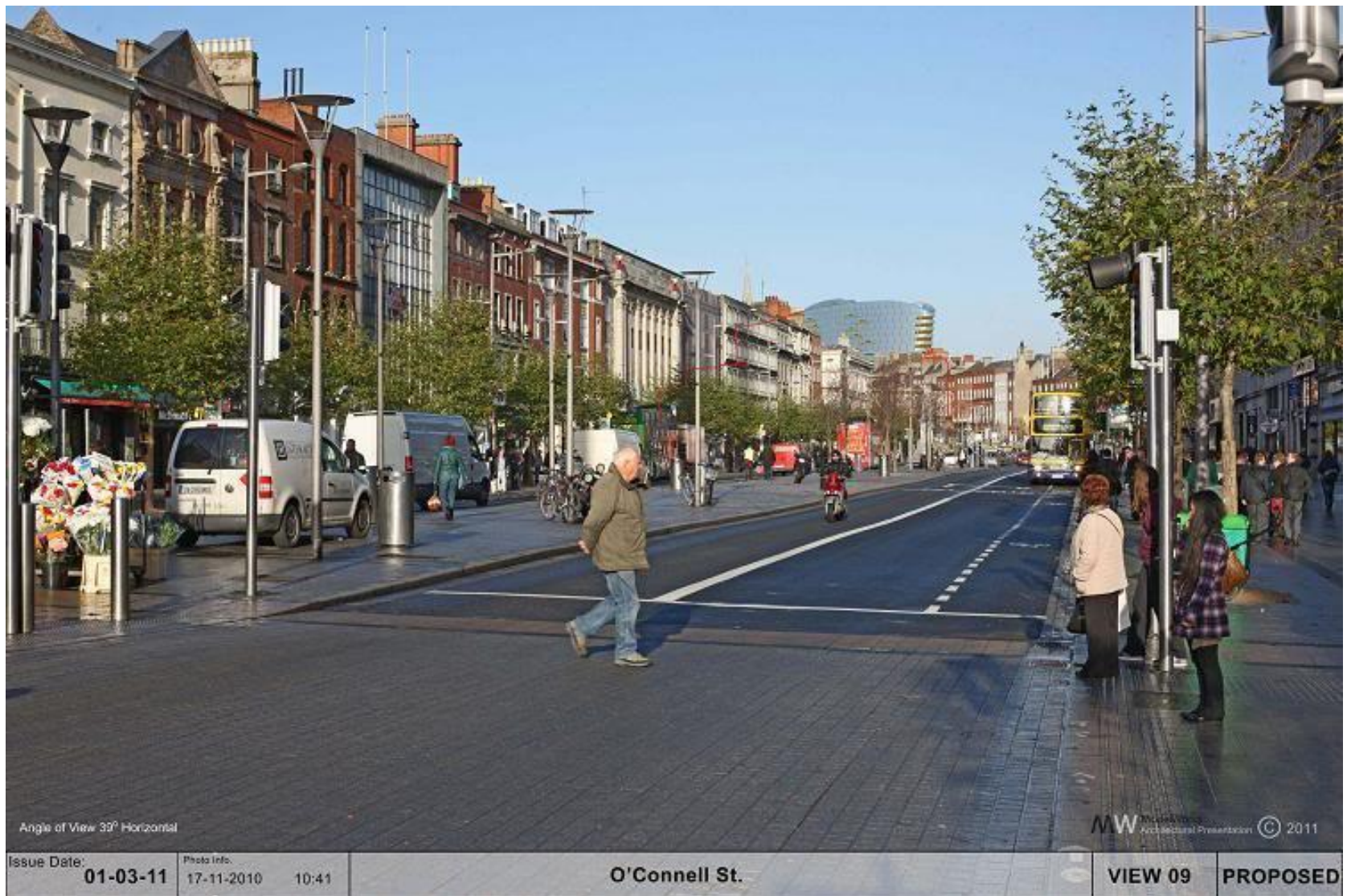


Former Richmond Asylum - Existing



Former Richmond Asylum - Proposed





Phomontage study



D'Olier Street - 'normal' camera lens



D'Olier Street – 'wide angle' camera lens



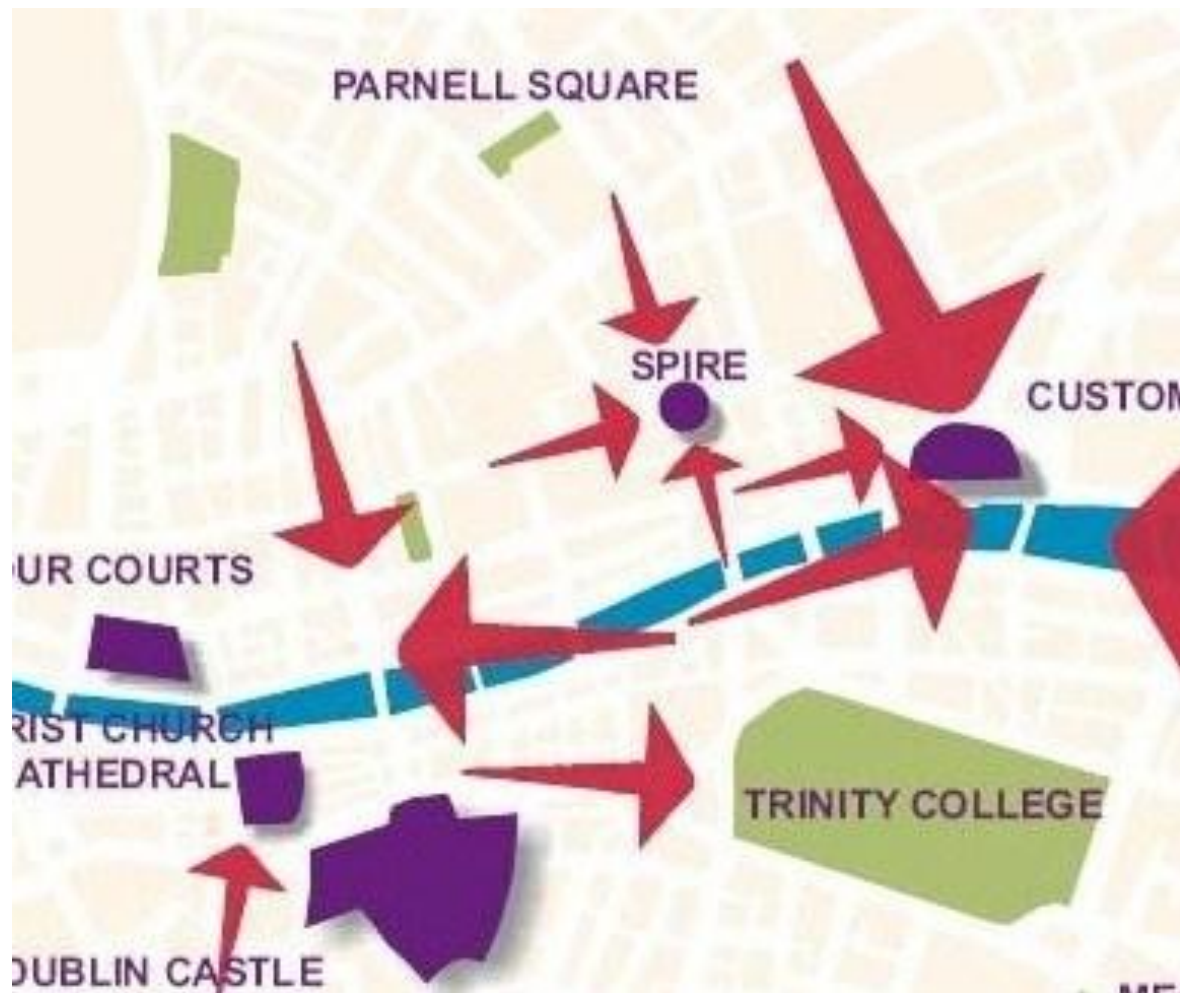
View with St. George's Church



O'Connell Street – 'city's most important street'

Dublin City Development Plan 2011-17 (Chapter 4 – Shaping the City)

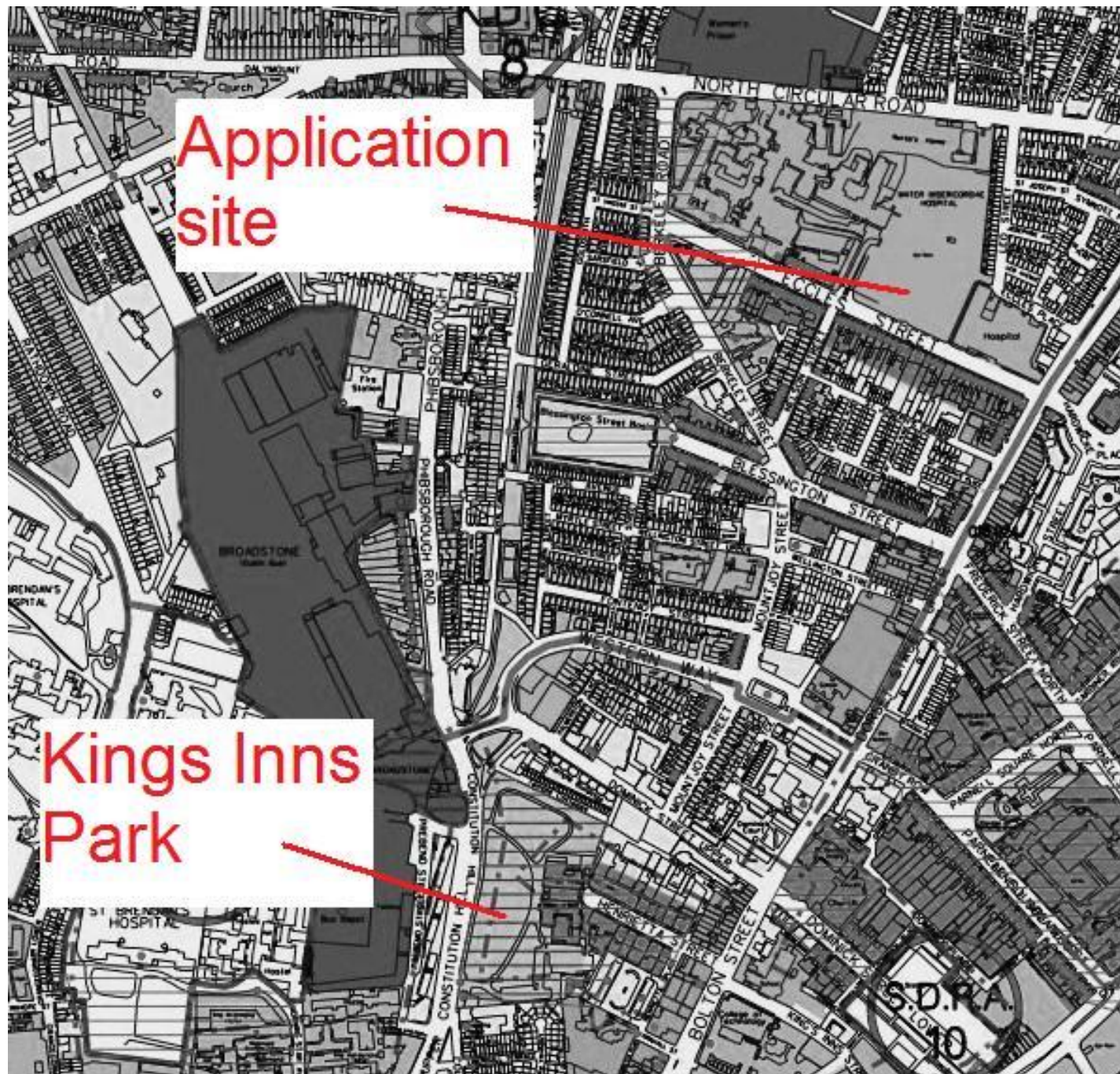




View north on O'Connell Street
identified as 'key view'



Estimated outline of proposed Children's Hospital from Kings Inns Park



Application
site

Kings Inns
Park



Impact on residential amenity



City skyline



‘Brussels style development’



Centre Monnaie, Brussels

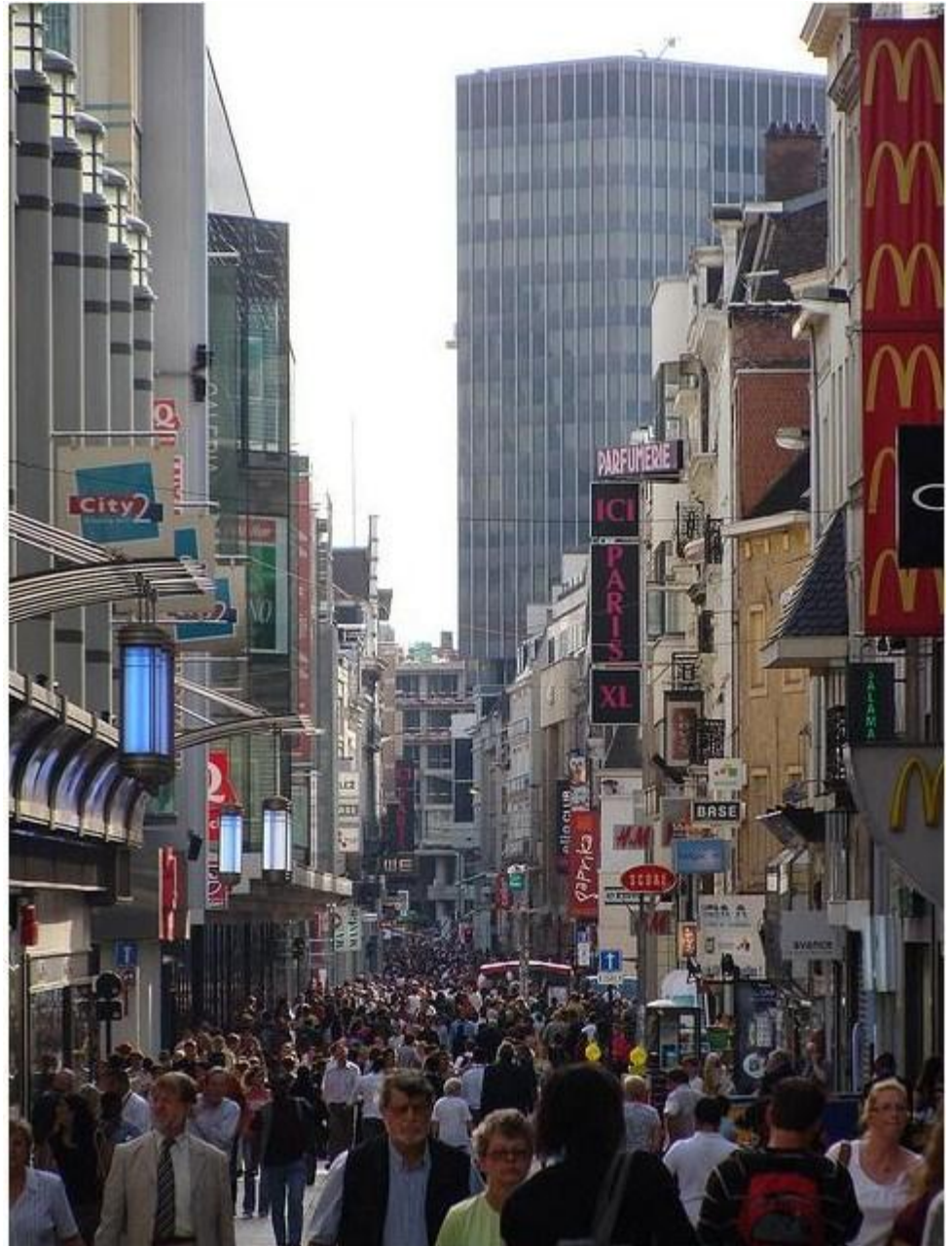


Centre Monnaie, Brussels

Centre Monnaie, Brussels



Centre Monnaie





Georgian Dublin



Amsterdam Science Centre



Graz Kunsthaus



Bruges Concert Hall



UNESCO site for Georgian Dublin?



End

